

International Arrivals to Ontario and Canada 2009

Ranked by 2009 Arrivals to Ontario

Source: Statistics Canada Border Crossings

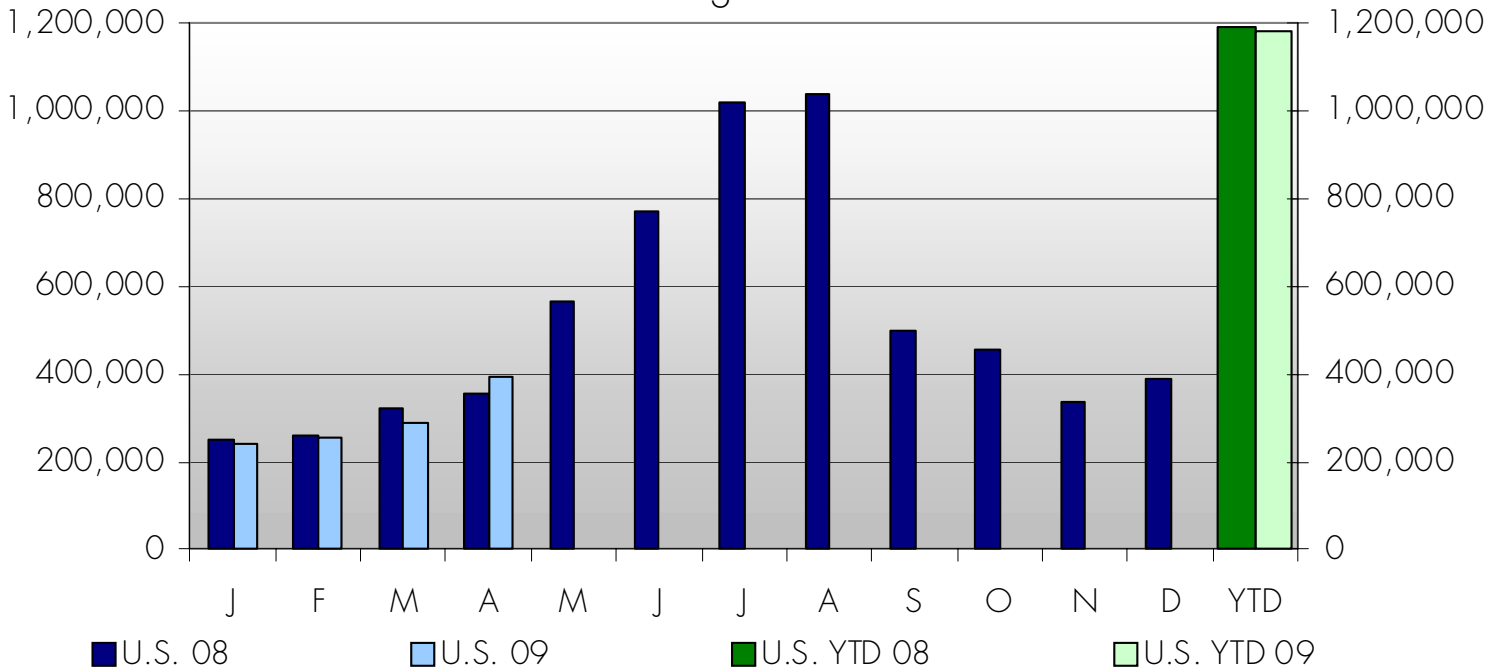
*Overnight Arrivals Only

	Apr-08	Apr-09	Change	Rest of CAN
TOTAL*	473,502	507,797	7.2%	0.9%
U.S*	357,667	394,390	10.3%	-0.6%
Overseas*	115,835	113,407	-2.1%	3.9%
UK	22,945	23,111	0.7%	1.8%
Mexico	7,845	8,571	9.3%	48.3%
Caribbean	6,865	8,547	24.5%	9.2%
Germany	7,240	8,163	12.7%	5.1%
Japan	5,819	5,464	-6.1%	-17.9%
China	3,895	3,450	-11.4%	28.0%
France	3,956	5,042	27.5%	2.6%
India	4,673	4,201	-10.1%	37.7%
South Korea	4,661	2,749	-41.0%	-20.9%
Israel	3,848	2,968	-22.9%	-22.6%
Brazil	3,769	2,667	-29.2%	-21.6%
Italy	3,790	3,040	-19.8%	5.0%
Netherlands	3,758	3,156	-16.0%	-20.9%
Australia	3,818	2,677	-29.9%	0.6%
Hong Kong	1,858	2,380	28.1%	46.5%
Spain	1,692	1,279	-24.4%	0.7%
UAE	812	942	16.0%	54.6%
Argentina	716	671	-6.3%	6.7%
Taiwan	579	416	-28.2%	-19.2%

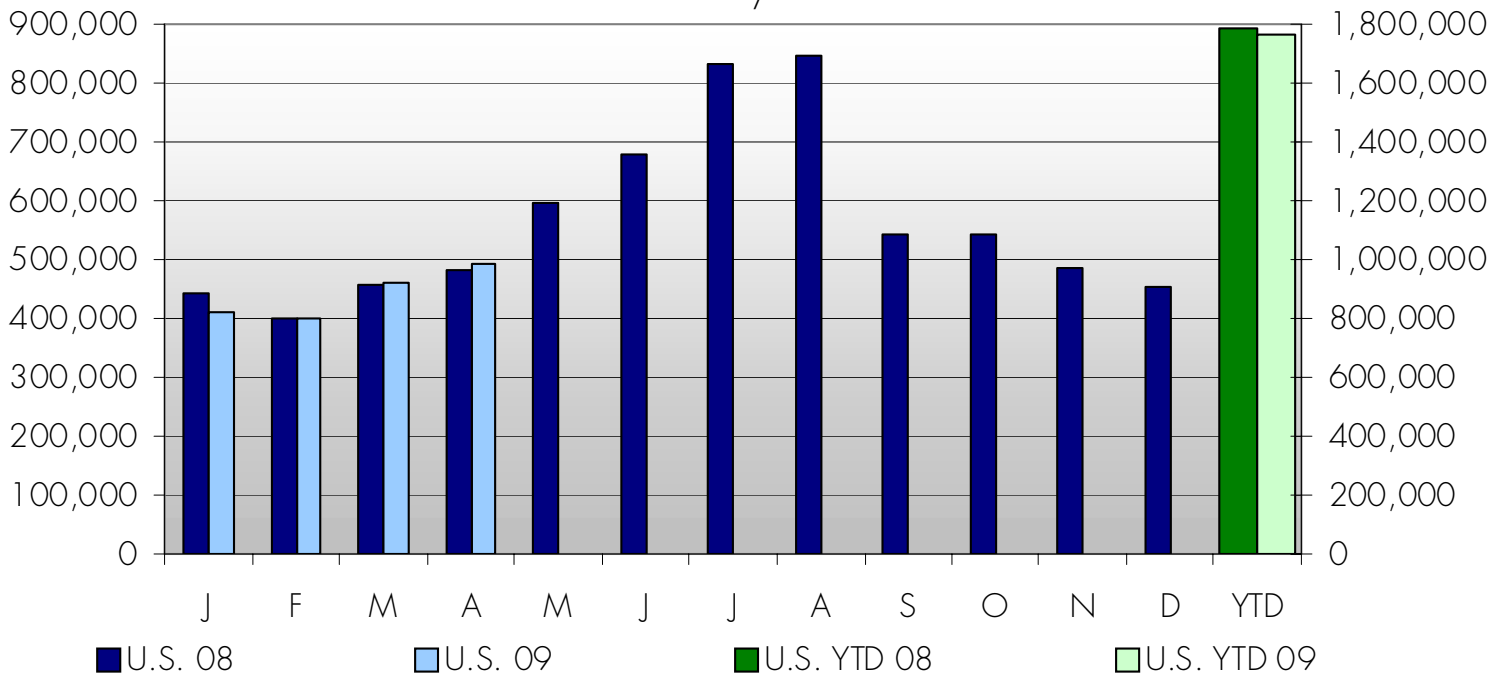
	YTD 08	YTD 09	Change	Rest of CAN
TOTAL*	1,553,266	1,514,096	-2.5%	-6.6%
U.S*	1,193,662	1,182,258	-1.0%	-7.0%
Overseas*	359,604	331,838	-7.7%	-5.9%
UK	67,906	59,844	-11.9%	-20.5%
Germany	23,158	23,595	1.9%	7.3%
Mexico	28,561	23,440	-17.9%	0.4%
Caribbean	21,735	22,606	4.0%	-12.0%
France	13,115	15,480	18.0%	-2.5%
China	13,157	13,258	0.8%	22.9%
Brazil	13,590	13,074	-3.8%	-0.4%
Japan	20,250	12,975	-35.9%	-14.7%
India	12,706	11,634	-8.4%	34.3%
South Korea	15,348	10,213	-33.5%	-20.4%
Israel	10,802	9,339	-13.5%	-9.0%
Australia	10,607	8,394	-20.9%	-2.5%
Italy	9,958	8,198	-17.7%	16.4%
Netherlands	8,272	8,096	-2.1%	-18.1%
Hong Kong	7,423	7,380	-0.6%	-0.8%
Spain	4,290	3,530	-17.7%	-4.2%
UAE	2,725	3,071	12.7%	12.1%
Argentina	2,492	2,542	2.0%	20.5%
Taiwan	1,629	1,334	-18.1%	-13.4%

Charts- Ranked by 2008 Arrivals

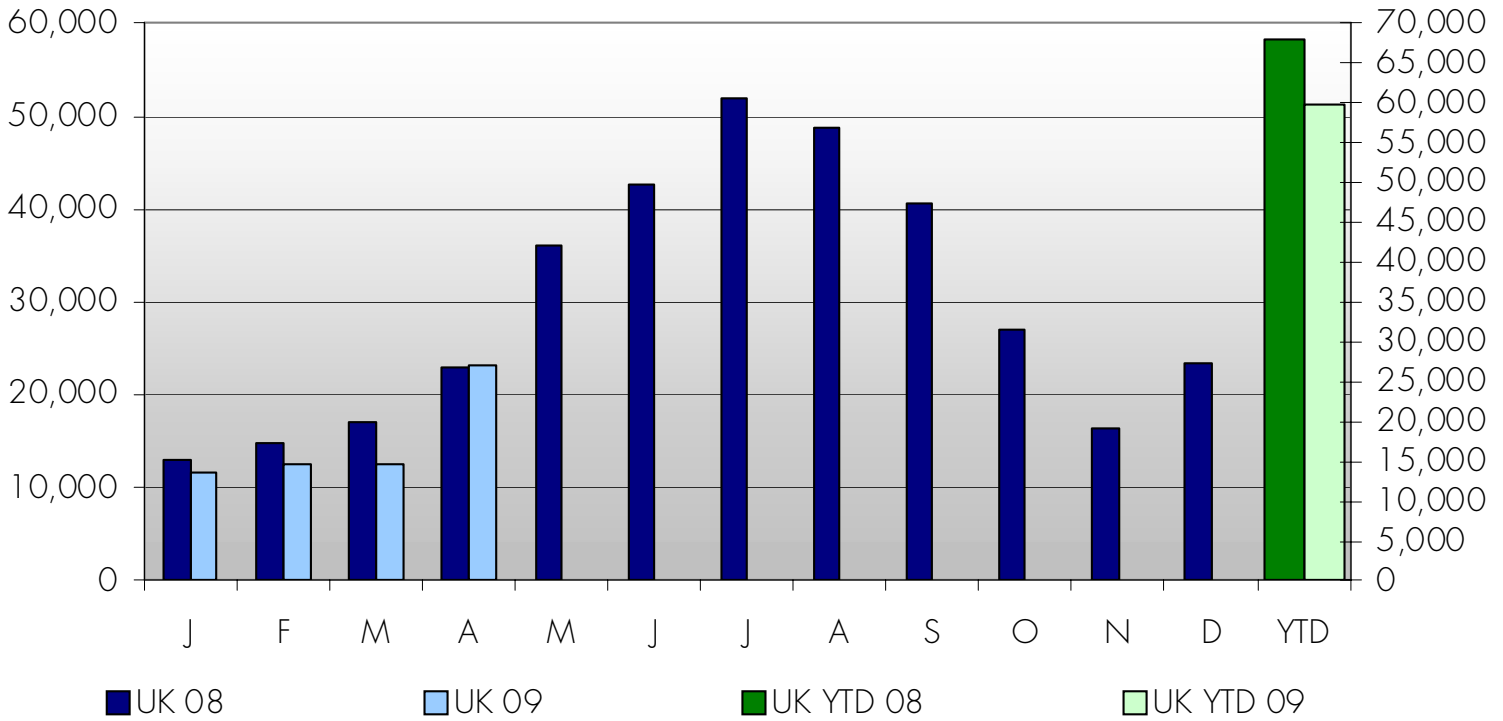
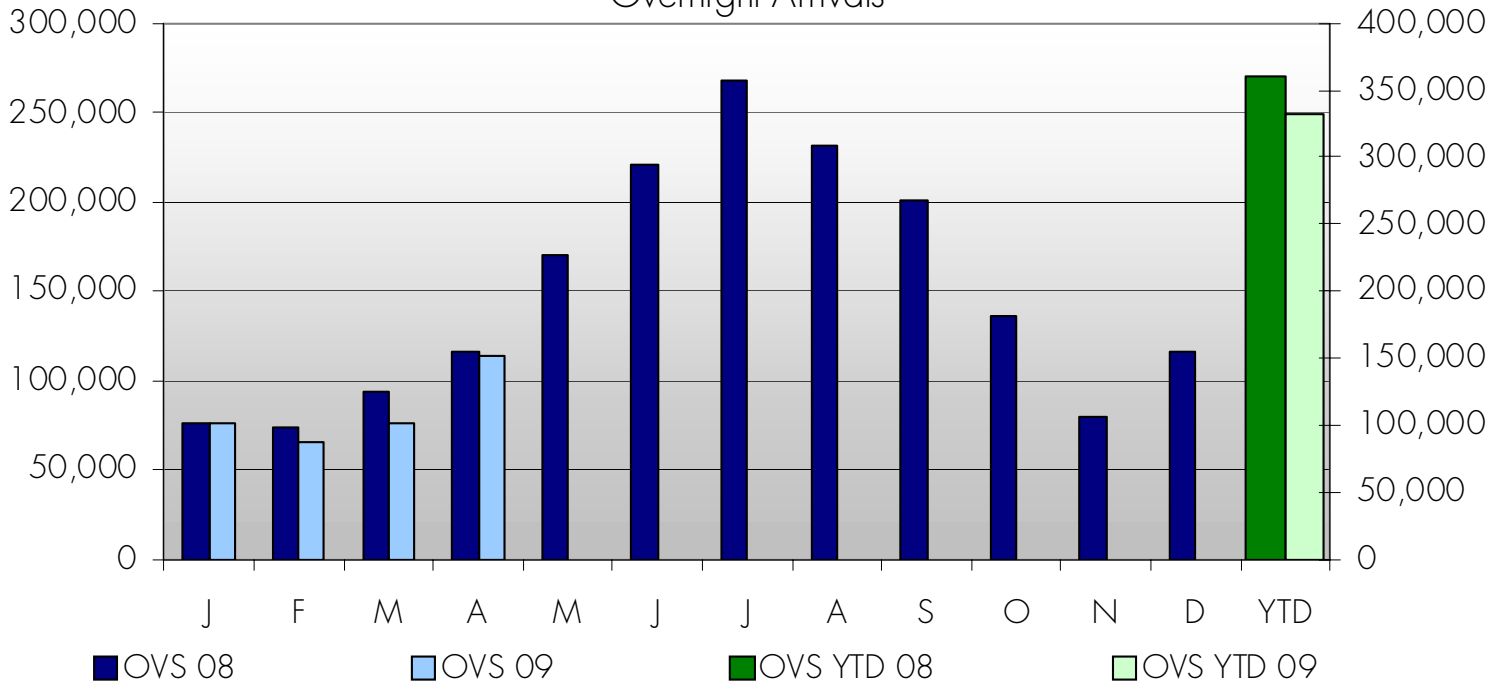
Overnight Arrivals

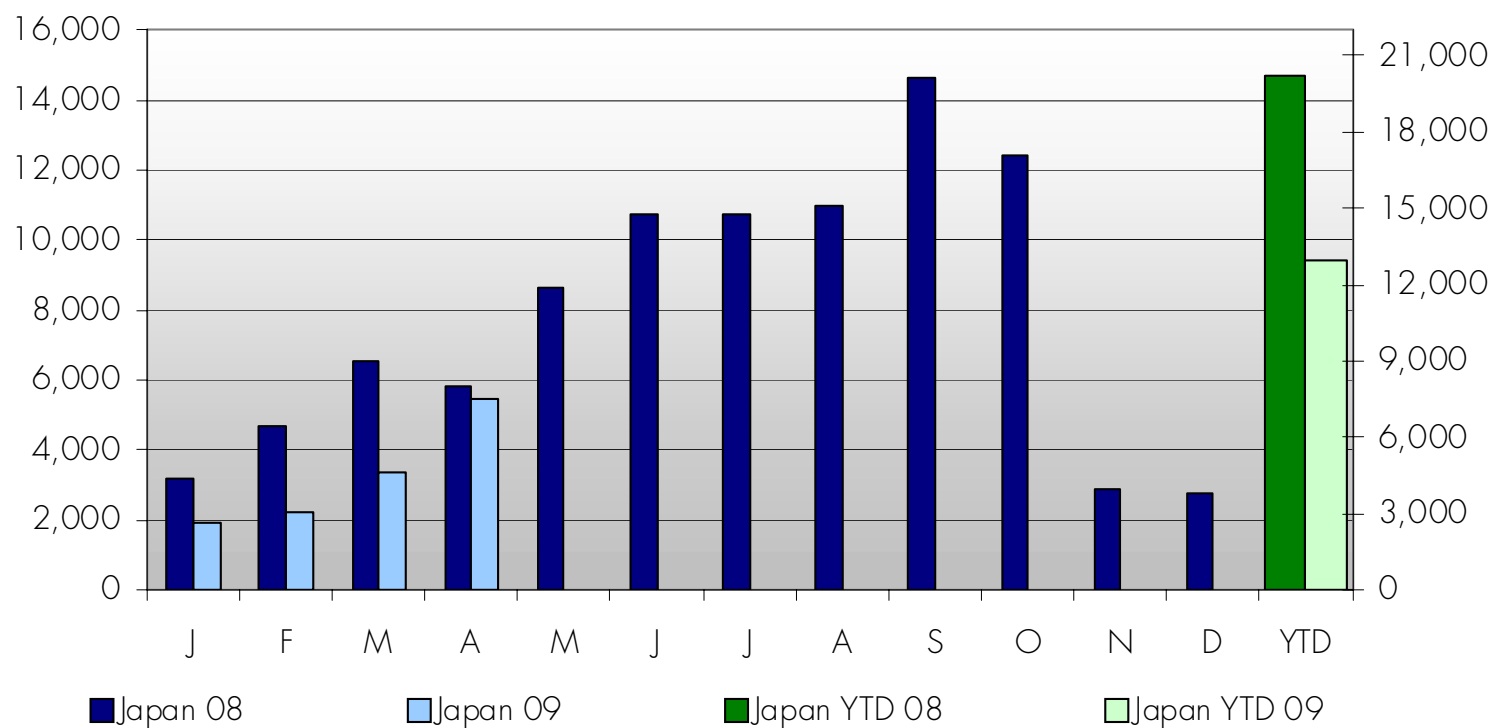
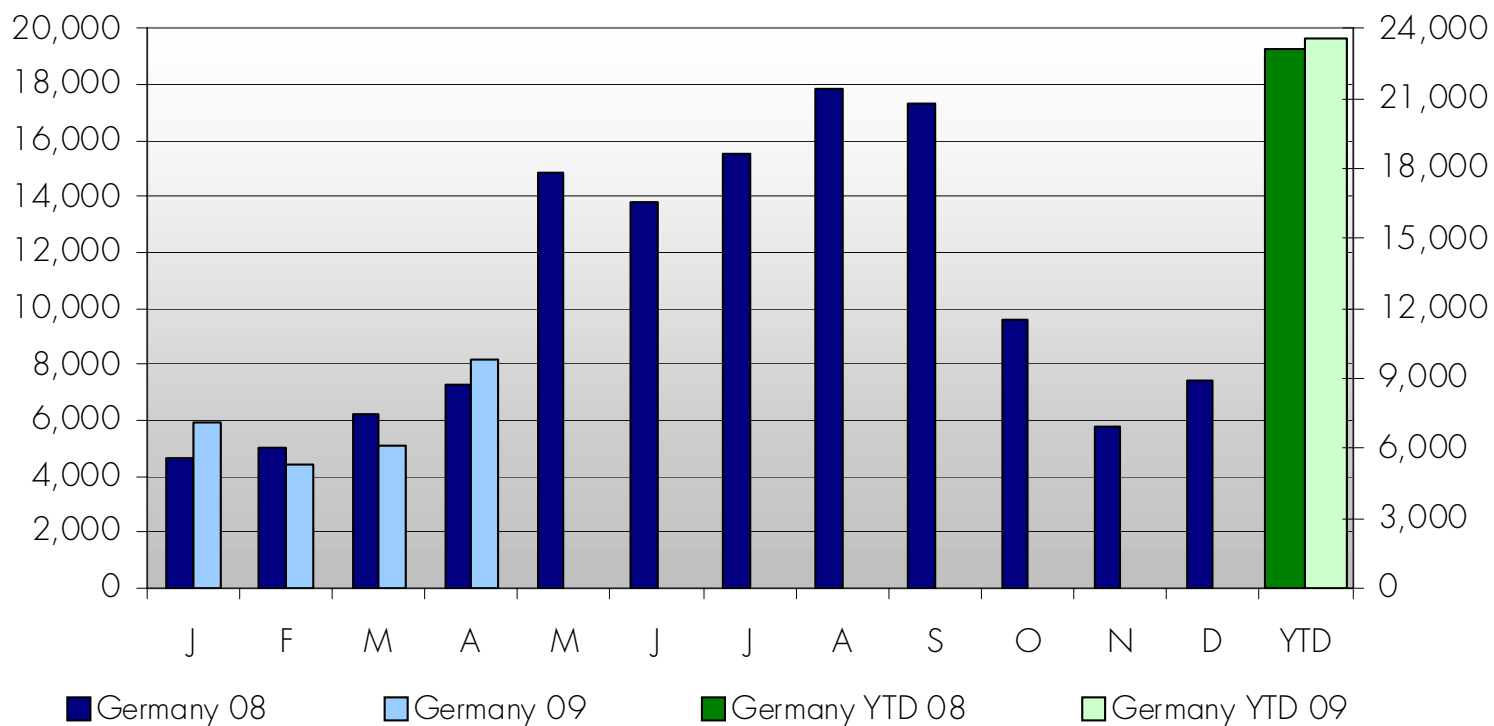


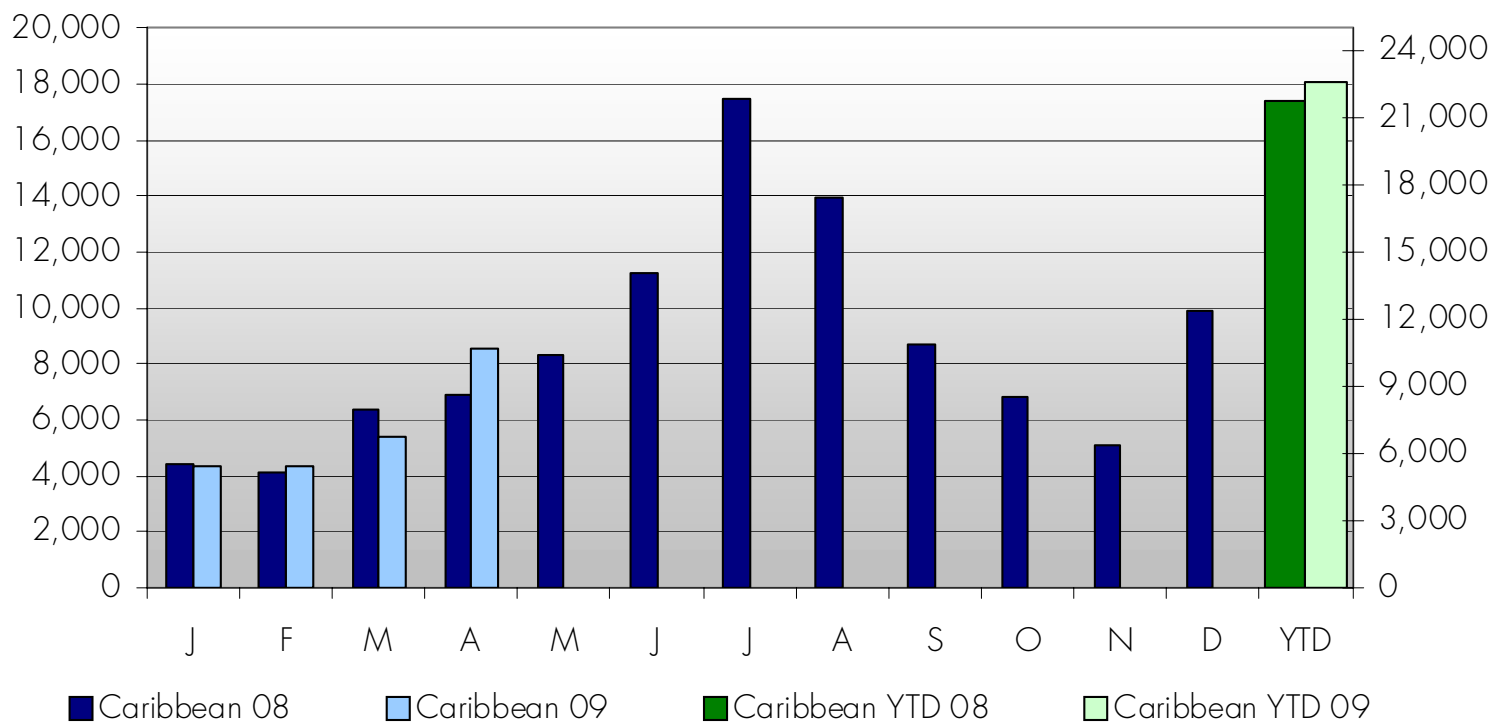
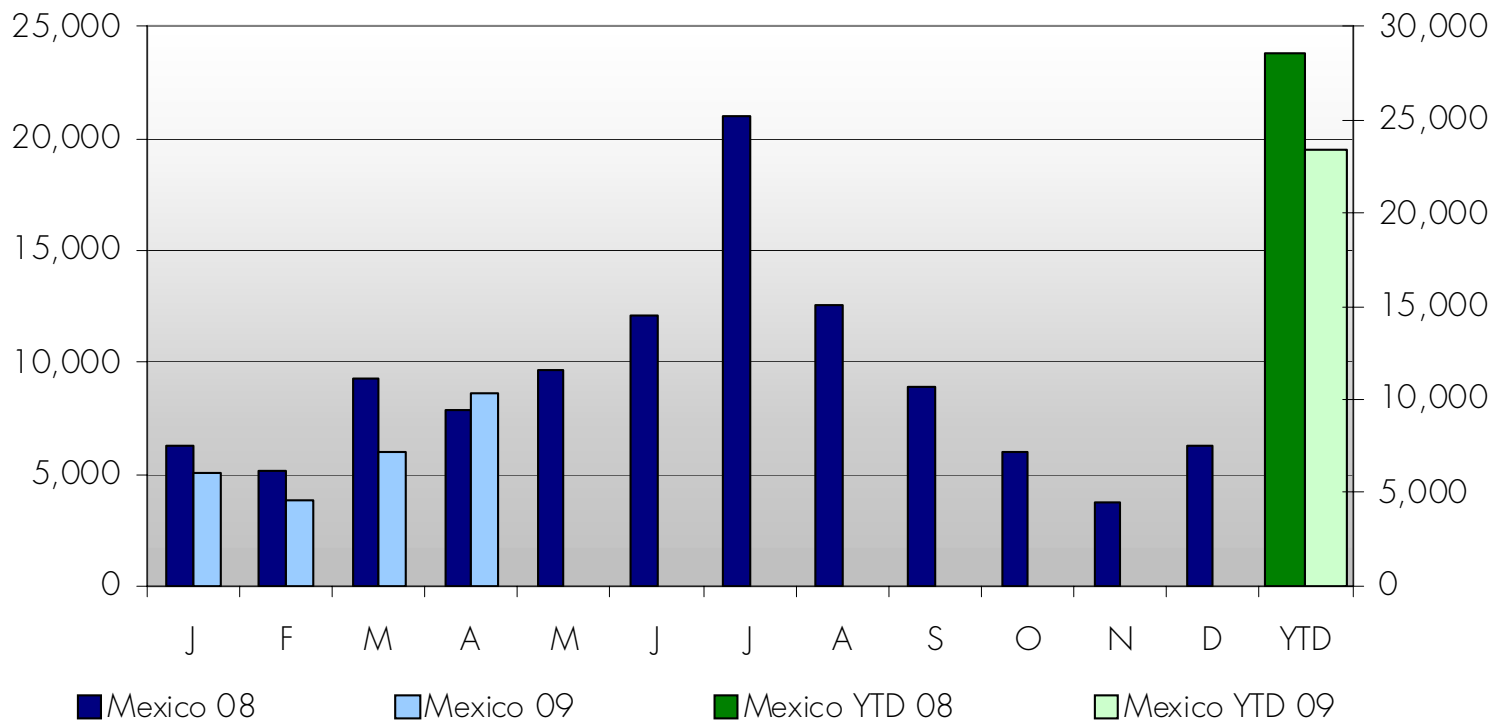
Same Day Arrivals

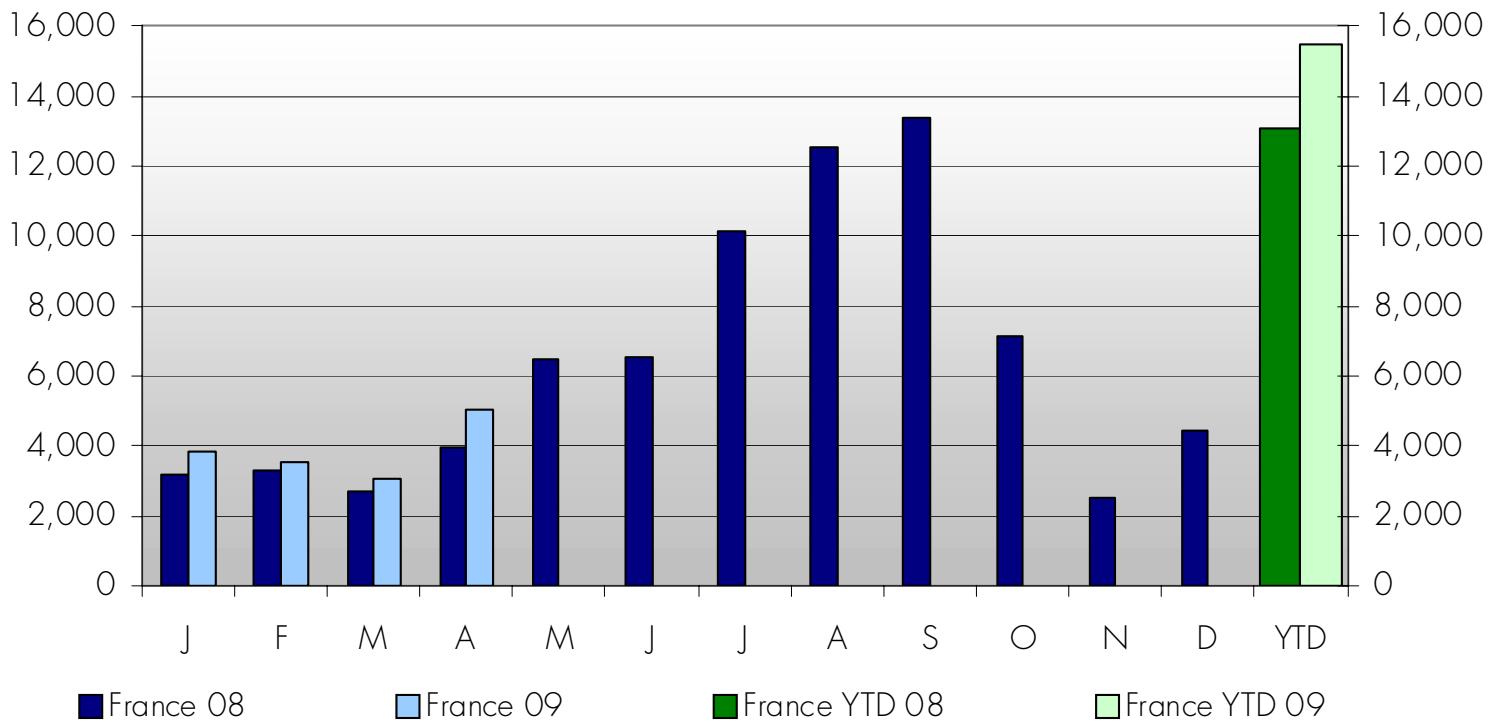
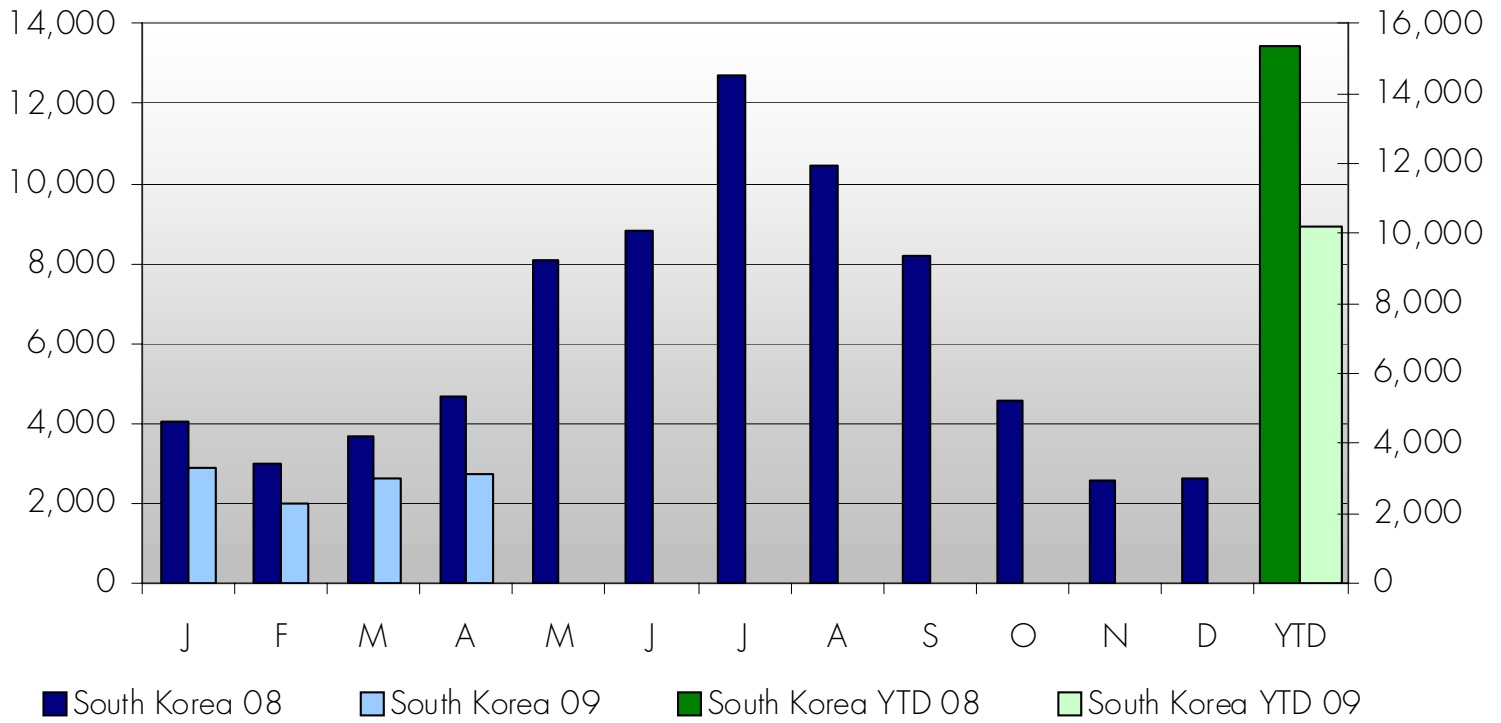


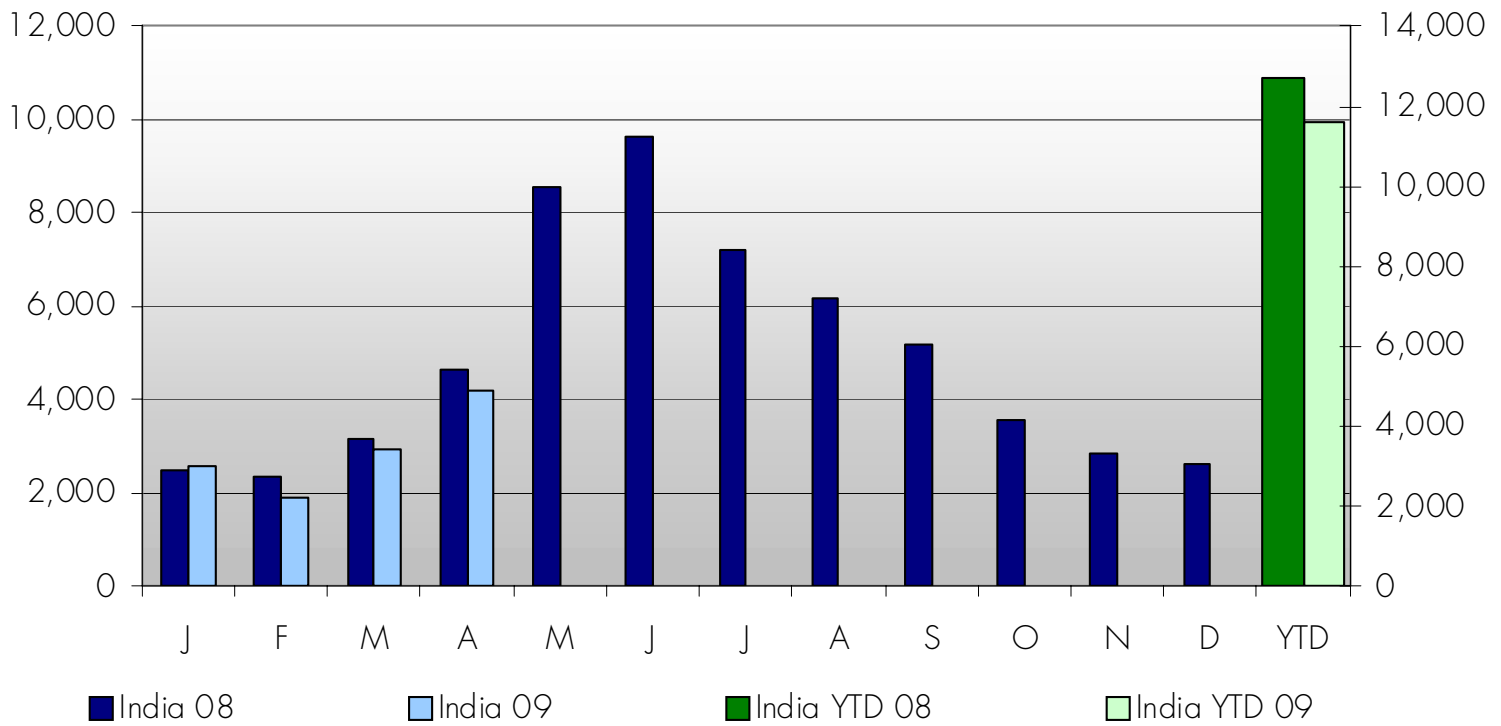
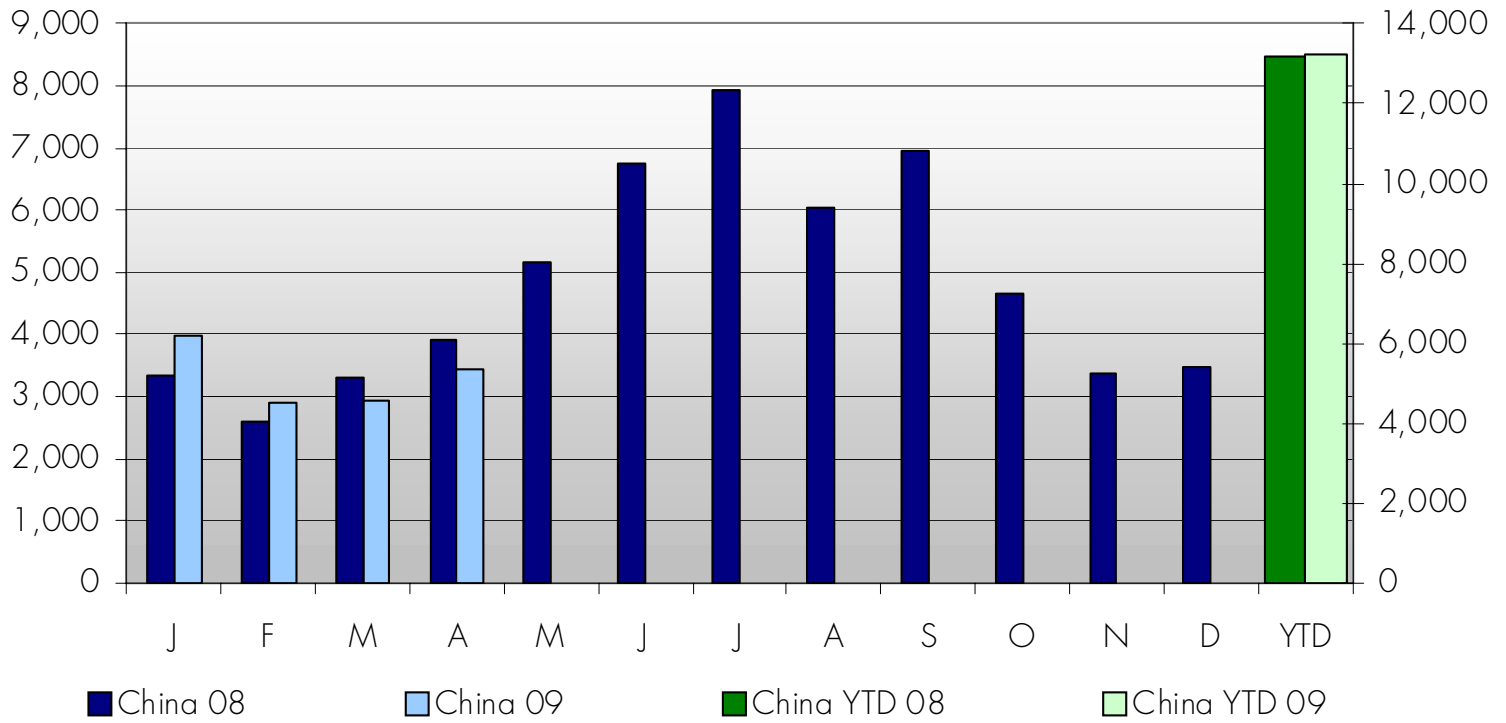
Overnight Arrivals

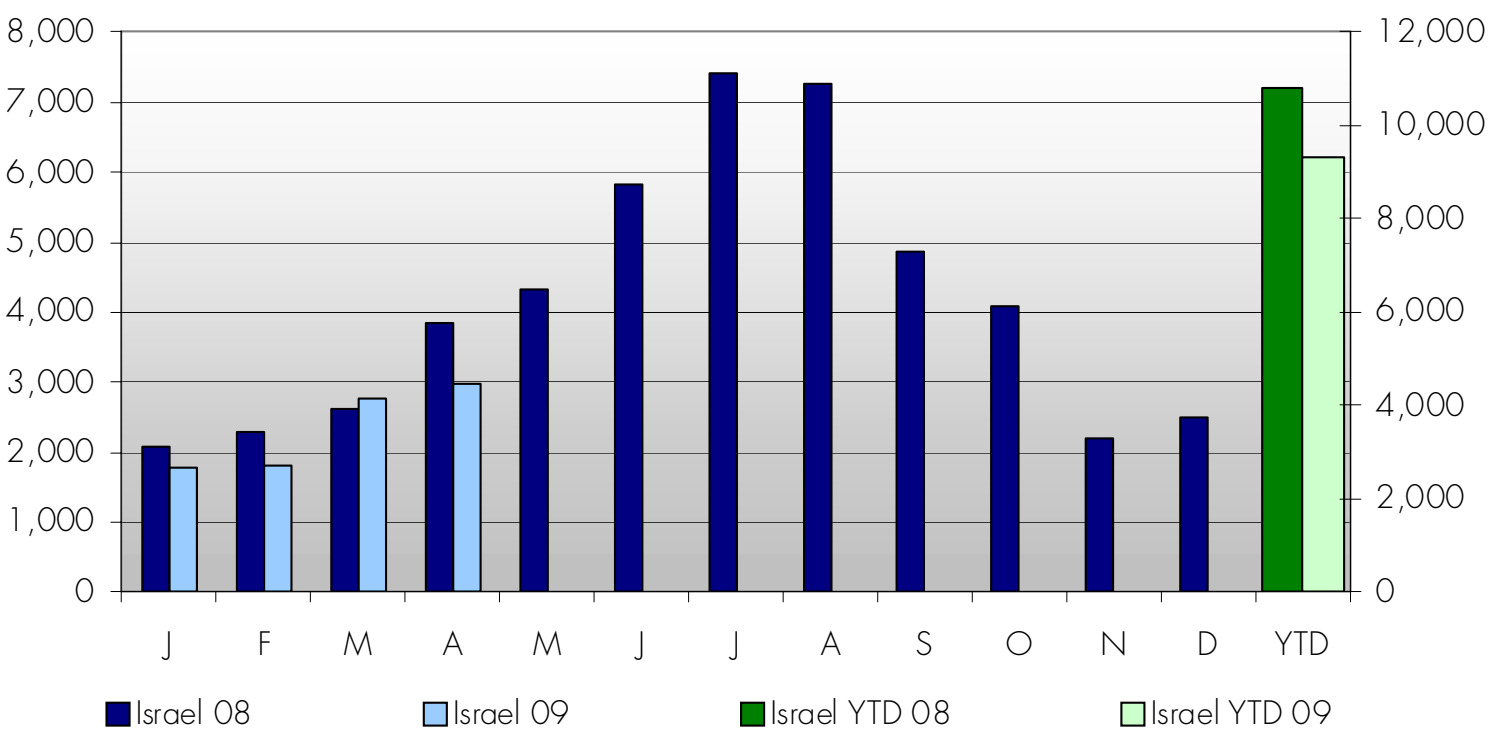
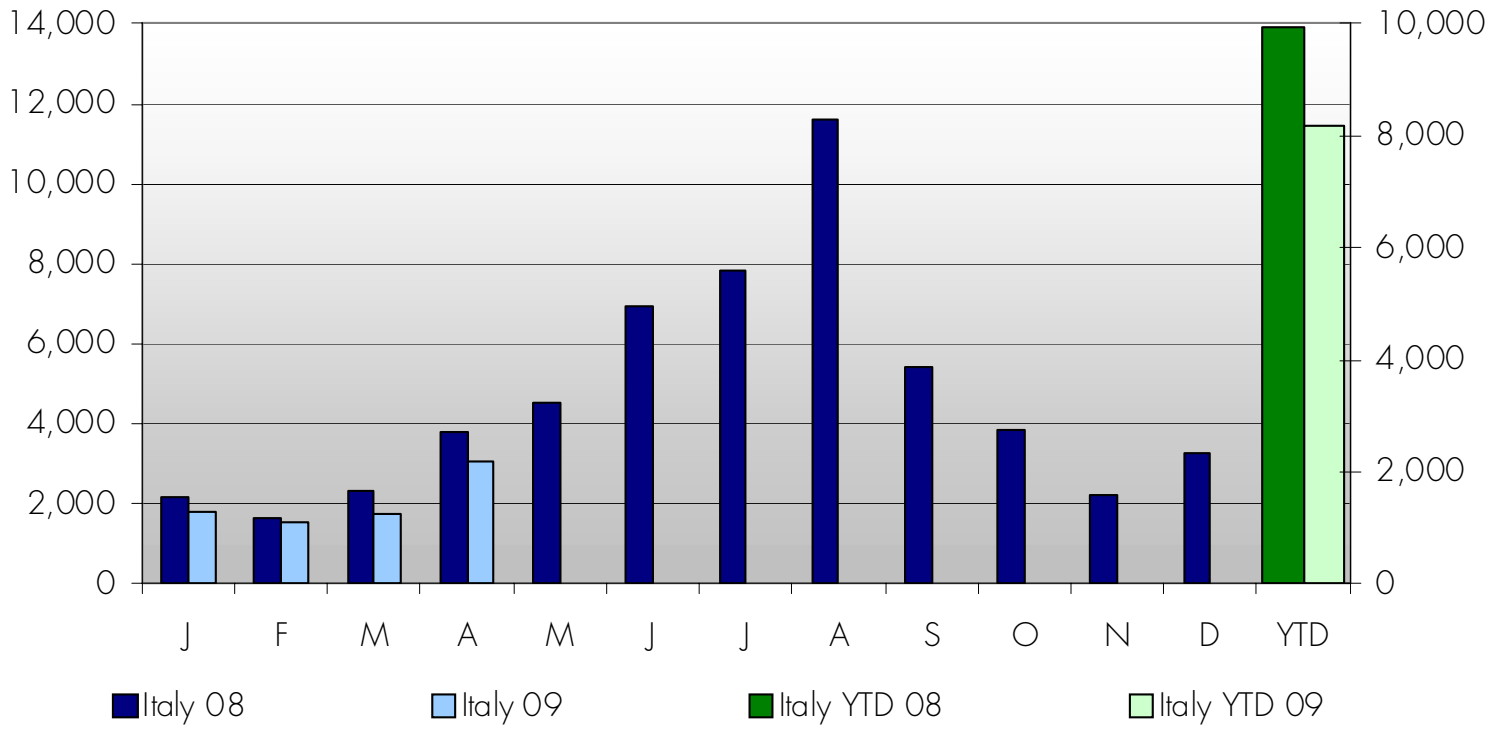


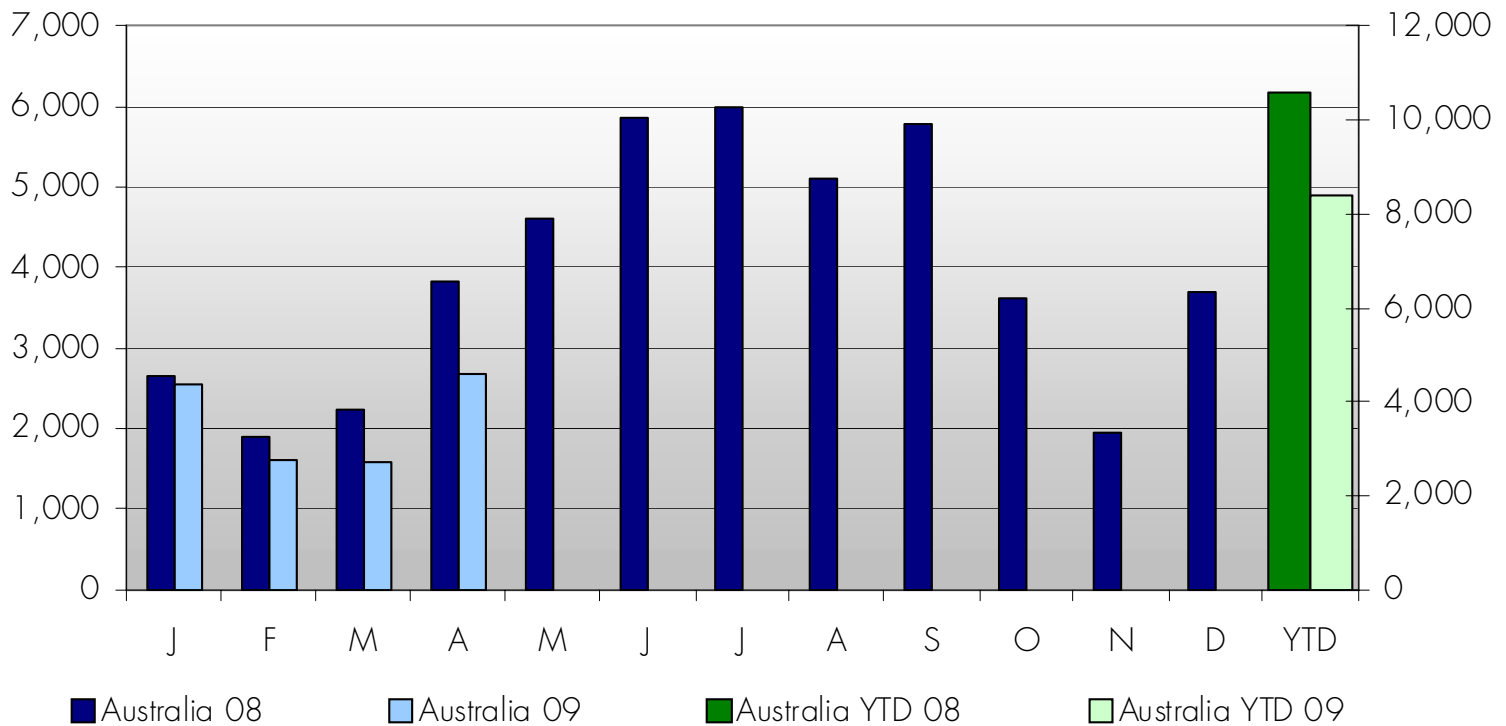
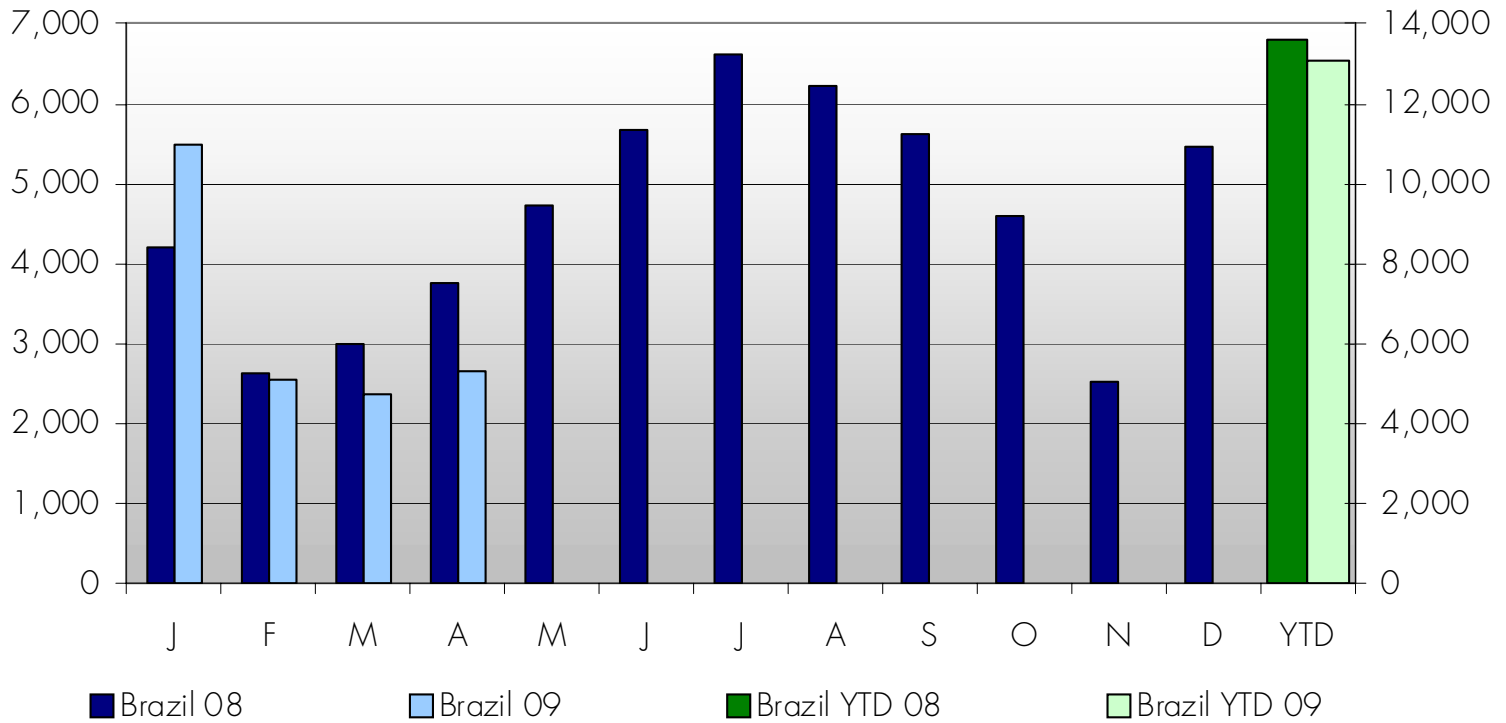


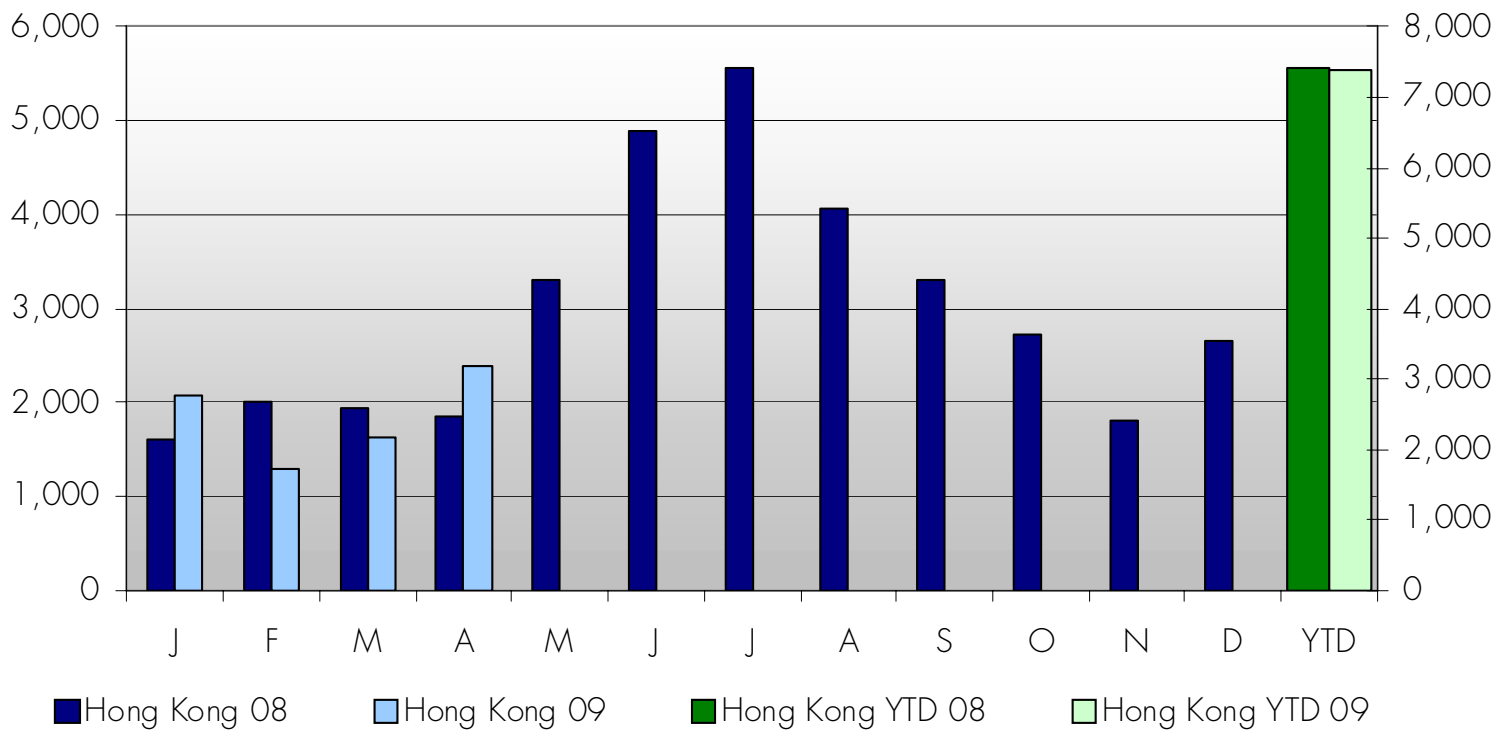
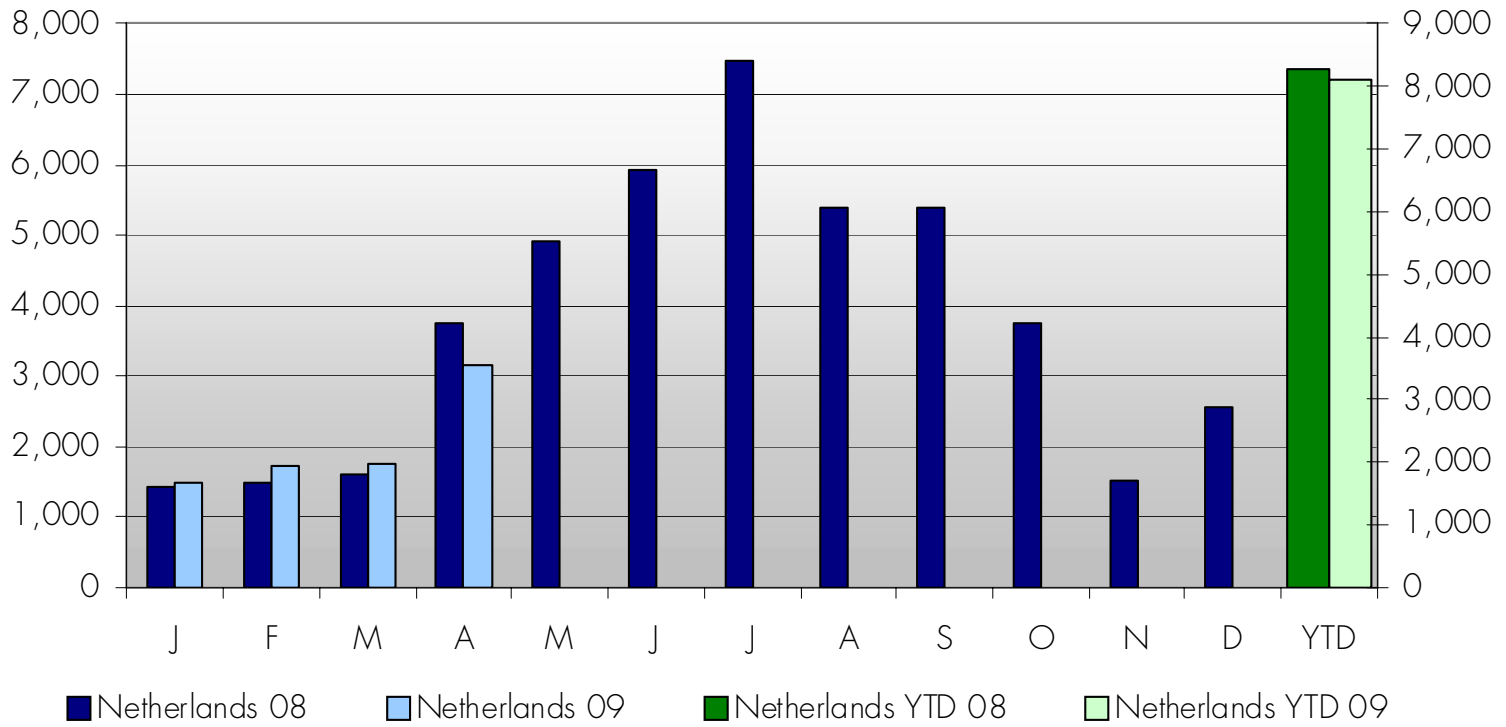


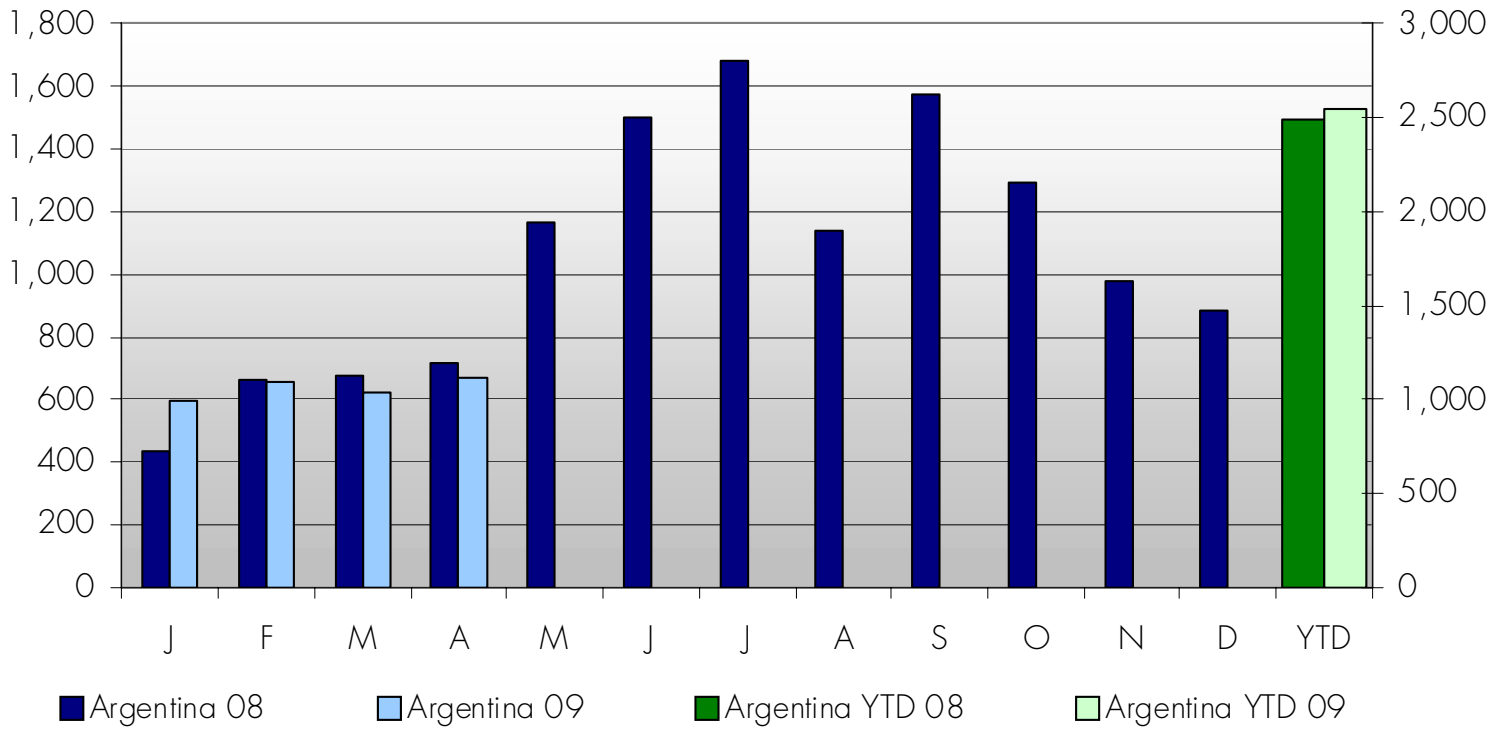
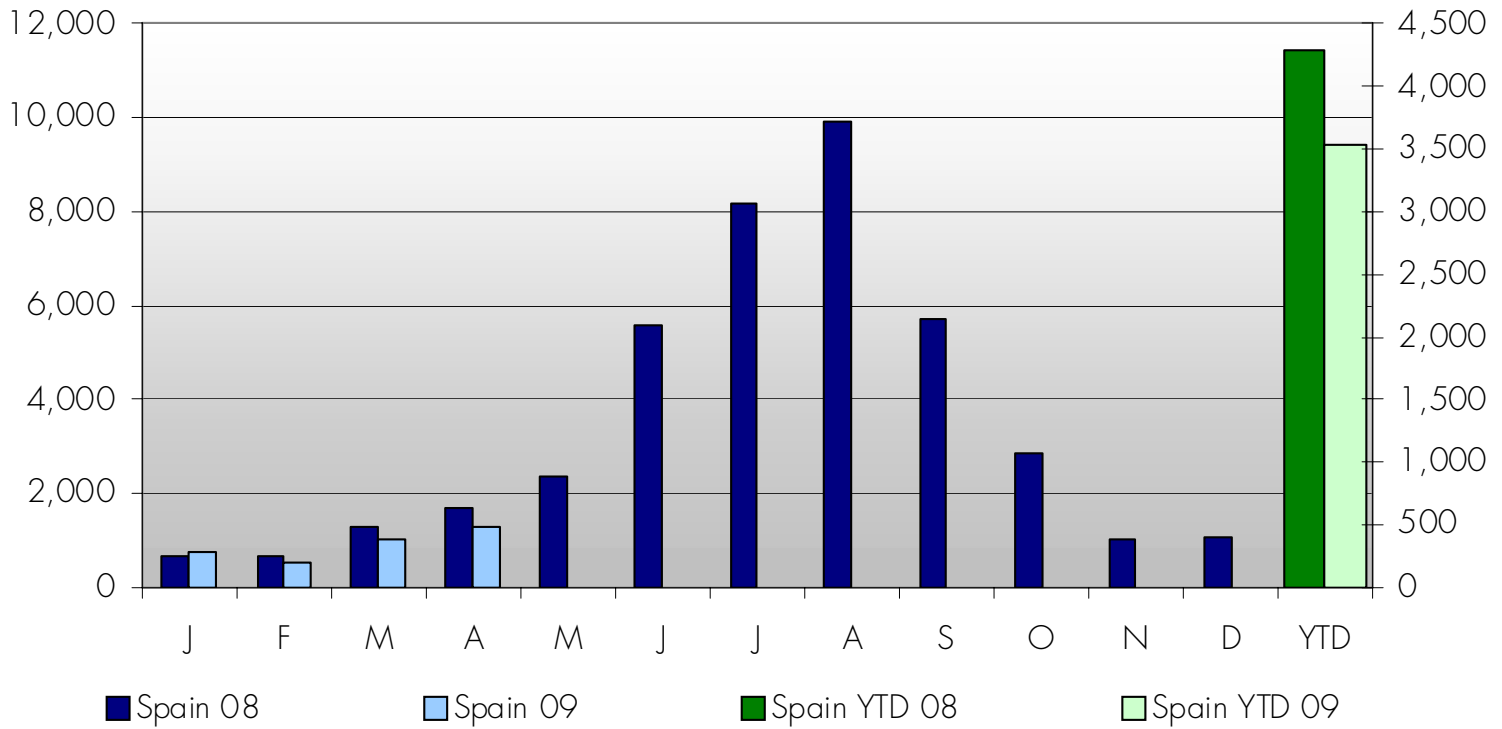


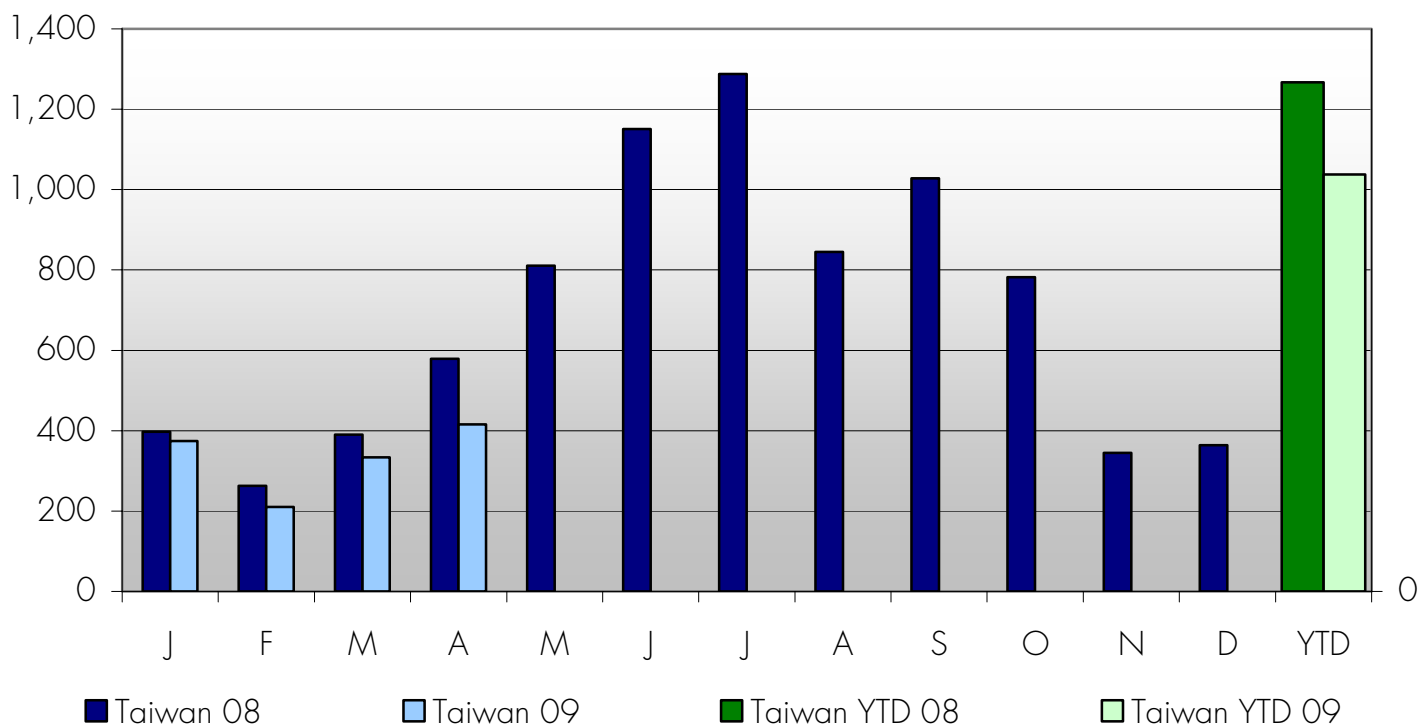
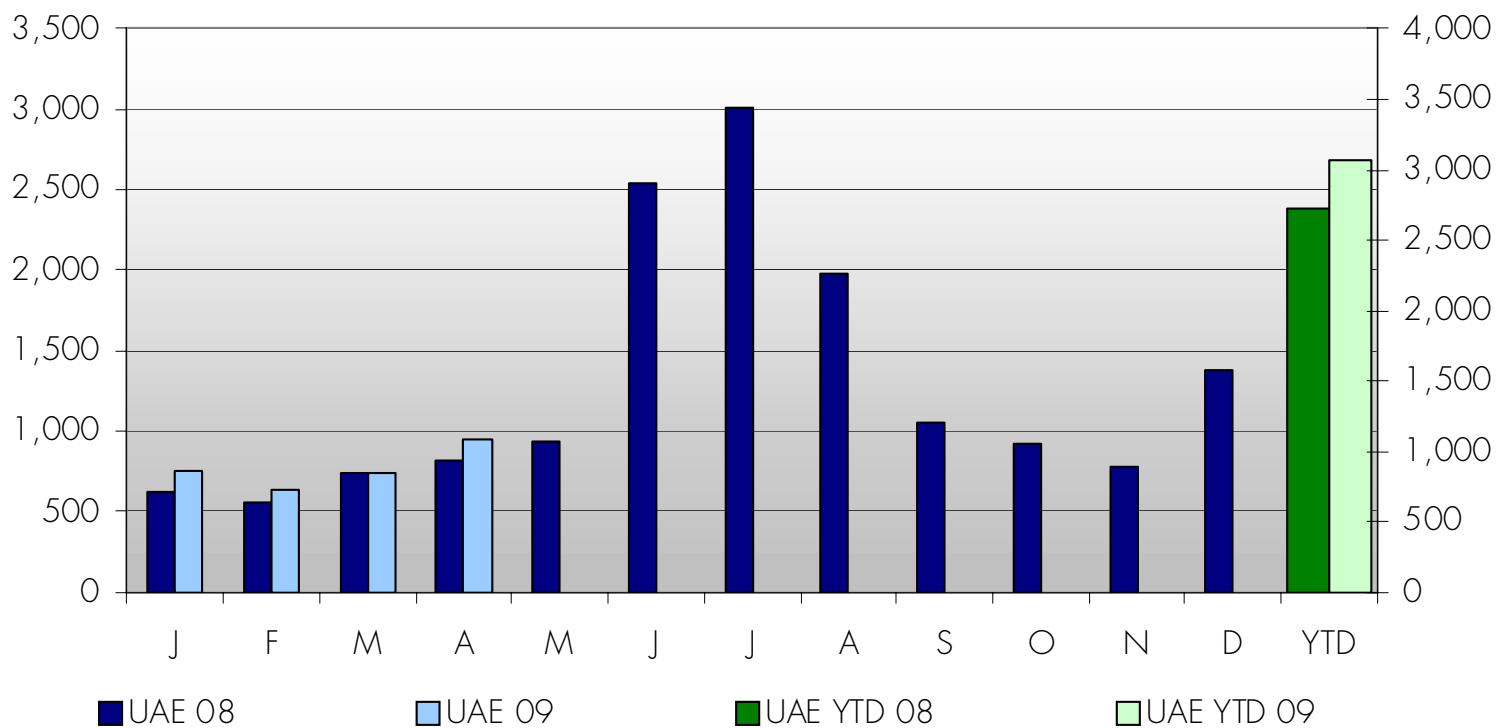










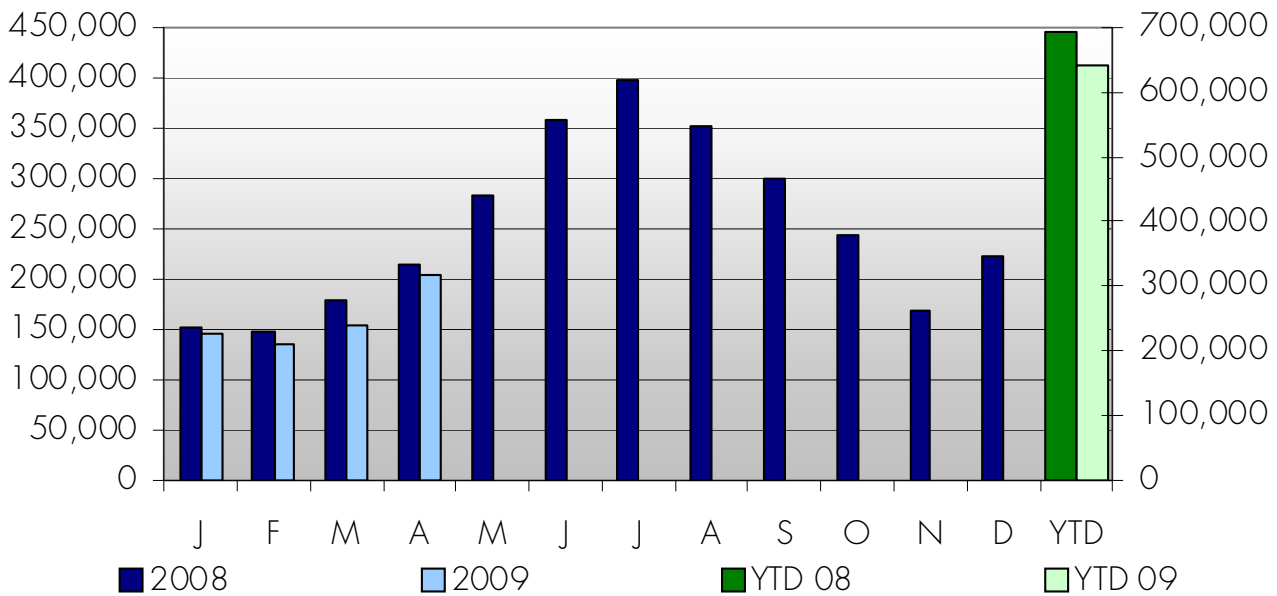


International Arrivals to Toronto Pearson and Island Airports
 Includes Commercial Airlines only, not private planes

Total

	Apr-08	Apr-09	Change	YTD 2008	YTD 2009	Change
U.S.	108,554	98,044	-9.7%	361,731	333,578	-7.8%
Overseas	104,655	105,394	0.7%	329,419	306,231	-7.0%
Total	213,209	203,438	-4.6%	691,150	639,809	-7.4%

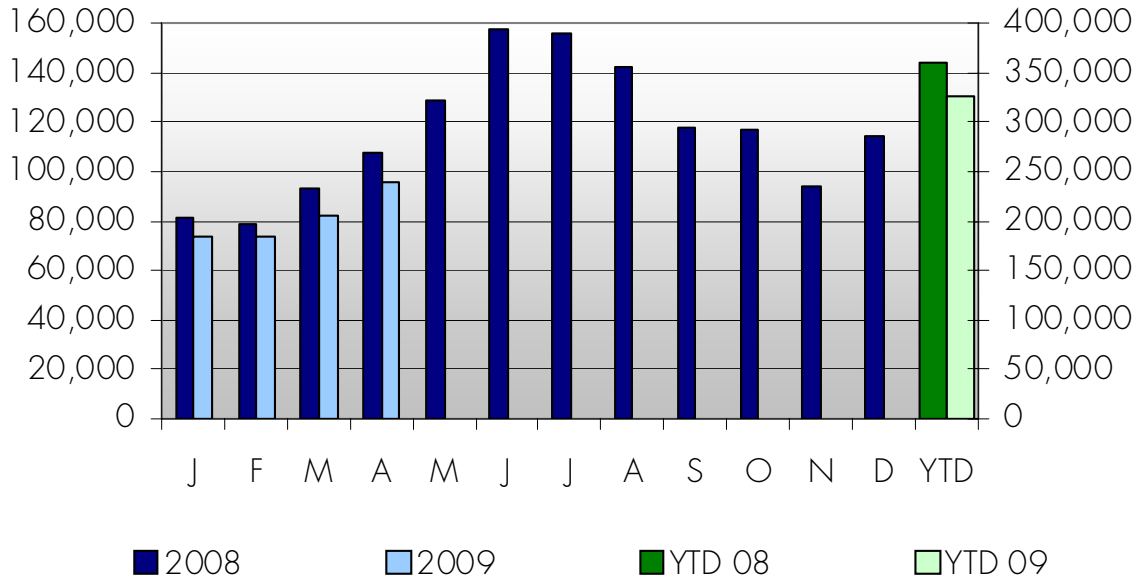
All International Air Arrivals to Pearson & Island



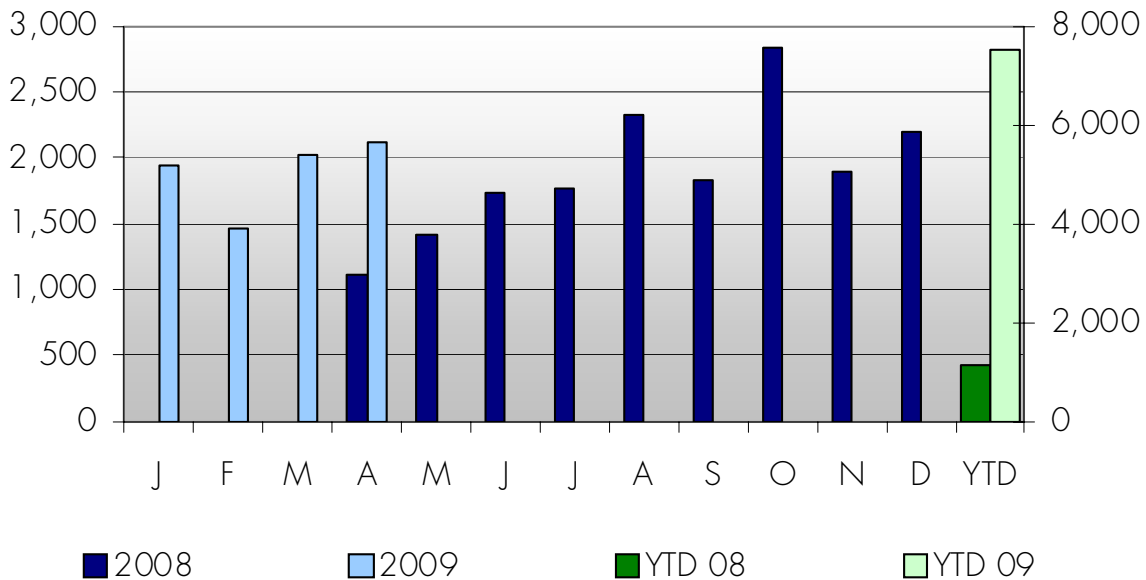
U.S.

	Apr-08	Apr-09	Change	YTD 2008	YTD 2009	Change
Pearson	107,434	95,931	-10.7%	360,611	326,043	-9.6%
Island	1,120	2,113	88.7%	1,120	7,535	572.8%
Total	108,554	98,044	-9.7%	361,731	333,578	-7.8%

U.S. Air Arrivals to Pearson

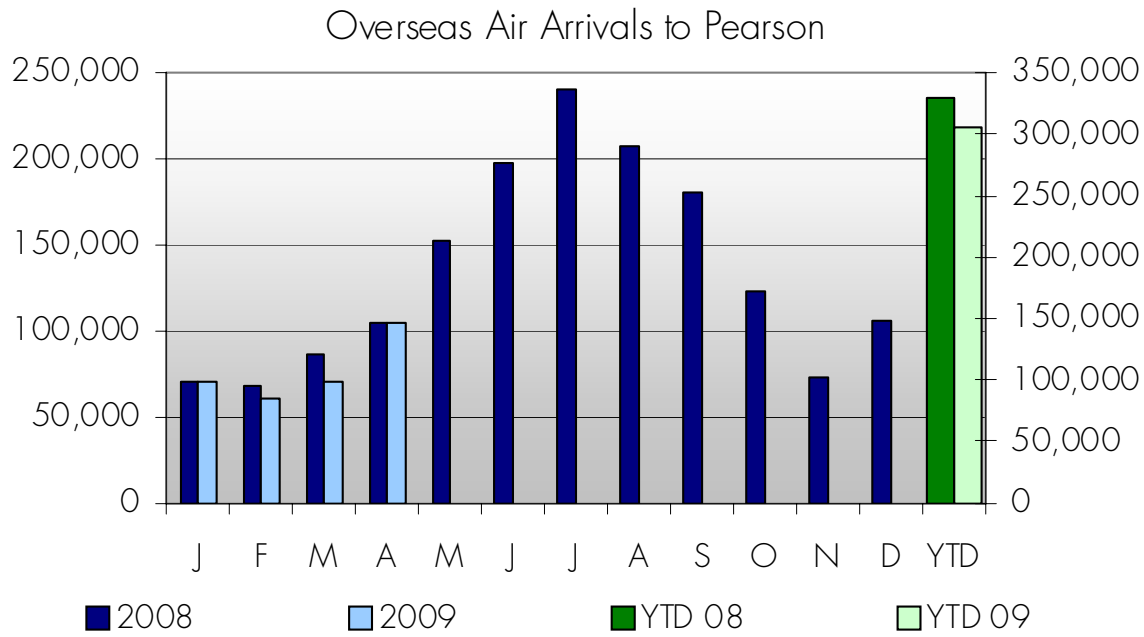


U.S. Air Arrivals to Island



Overseas

	Apr-08	Apr-09	Change	YTD 2008	YTD 2009	Change
Direct	83,445	80,875	-3.1%	258,455	236,357	-8.6%
Via U.S.	21,210	24,519	15.6%	70,964	69,874	-1.5%
Total	104,655	105,394	0.7%	329,419	306,231	-7.0%



Canadians Returning to Ontario

	Apr-08	Apr-09	Change	YTD 08	YTD 09	Change
From U.S.	1,804,285	1,663,066	-7.8%	6,751,999	6,245,198	-7.5%
From Overseas	305,332	336,585	10.2%	1,474,837	1,641,561	11.3%
Total	2,109,617	1,999,651	-5.2%	8,226,836	7,886,759	-4.1%

